

MuAnalysis Inc.
2301 St. Laurent Blvd
Suite 500
Ottawa, ON K1G 4J7
Canada
t. (613) 721-4664
f. (613) 721-4682
www.muanalysis.com

MuAnalysis

Leaders in diagnostic services for microelectronics and photonics

Cree XLAMP LED Lamp Teardown and Technology Analysis

Table of Contents

1. Product Identification	2
2. External Appearance and Principal Dimensions	2
3. Package General Description	6
- Substrate structure and material	
- Phosphor and encapsulation	
- Die configuration and attach	
- Electrical protection	
- Table of package parameters	
4. Semiconductor Die	22
- Materials, dimensions, and singulation	
- Appearance	
Lower level contact	
Upper level contact	
- Epi-stack	
- Table of die process parameters	
5. Summary	33

MuAnalysis Inc. makes no representations, does not warrant, and shall have no liability whatsoever in respect of any information disclosed pursuant to any agreement to provide services.

1. Product Identification

The device subject to teardown for this work is a cool white Cree XLAMP XRCWHT-L1-WM-N4-0-01

Manufacturer	Device ID	Date/Lot code
Cree	XLAMP XRCWHT-L1-WM-N4-0-01	734

2. External Appearance and Principal Dimensions

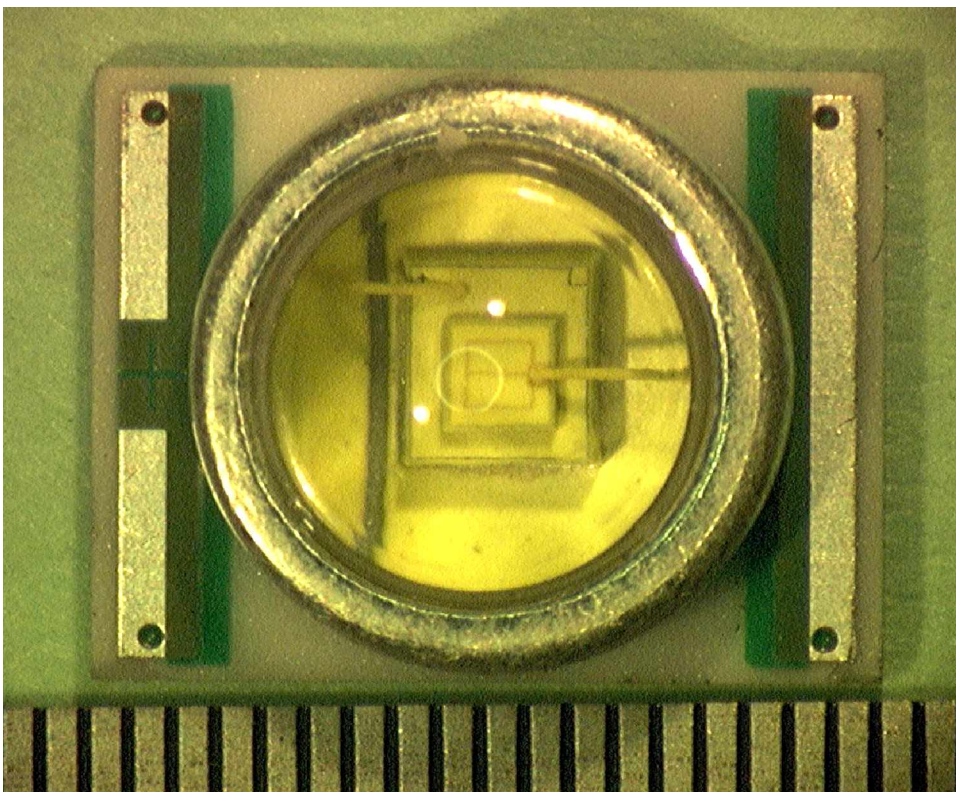


Figure 2.1: Top view, with a scale in 0.5 mm increments. No branding or date code is seen on the device.

MuAnalysis Inc. makes no representations, does not warrant, and shall have no liability whatsoever in respect of any information disclosed pursuant to any agreement to provide services.

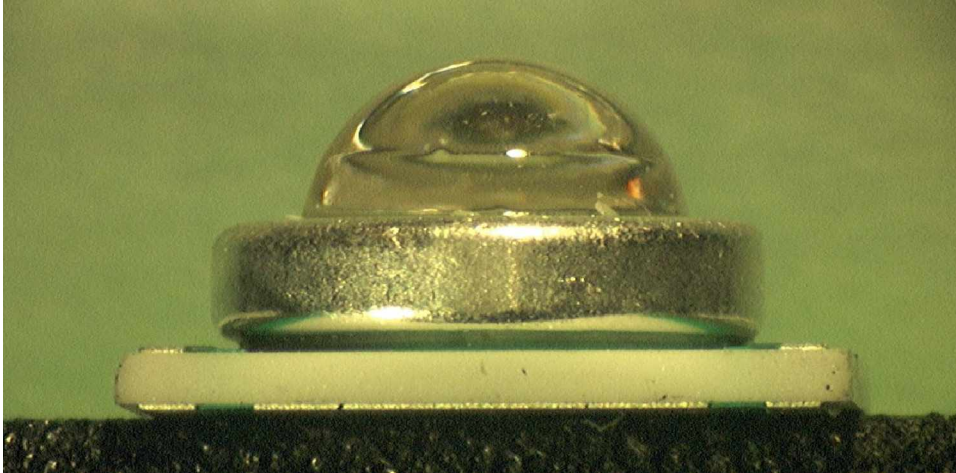


Figure 2.2: Side view.

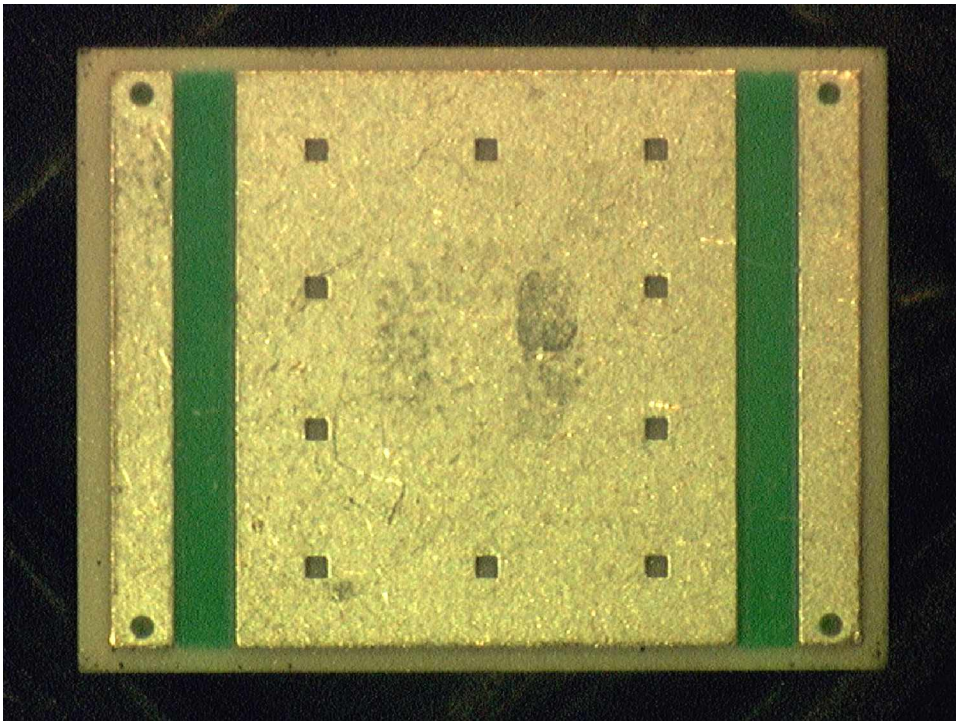


Figure 2.3: Underside view. The two end pads connect to the front by means of vias through the substrate. The larger pad in the middle is for thermal dissipation.

To purchase the full report, or to request further analyses on this product, please contact sales@muanalysis.com or call 1-613-721-4664

© 2008. MuAnalysis Inc.

MuAnalysis Inc. makes no representations, does not warrant, and shall have no liability whatsoever in respect of any information disclosed pursuant to any agreement to provide services.